

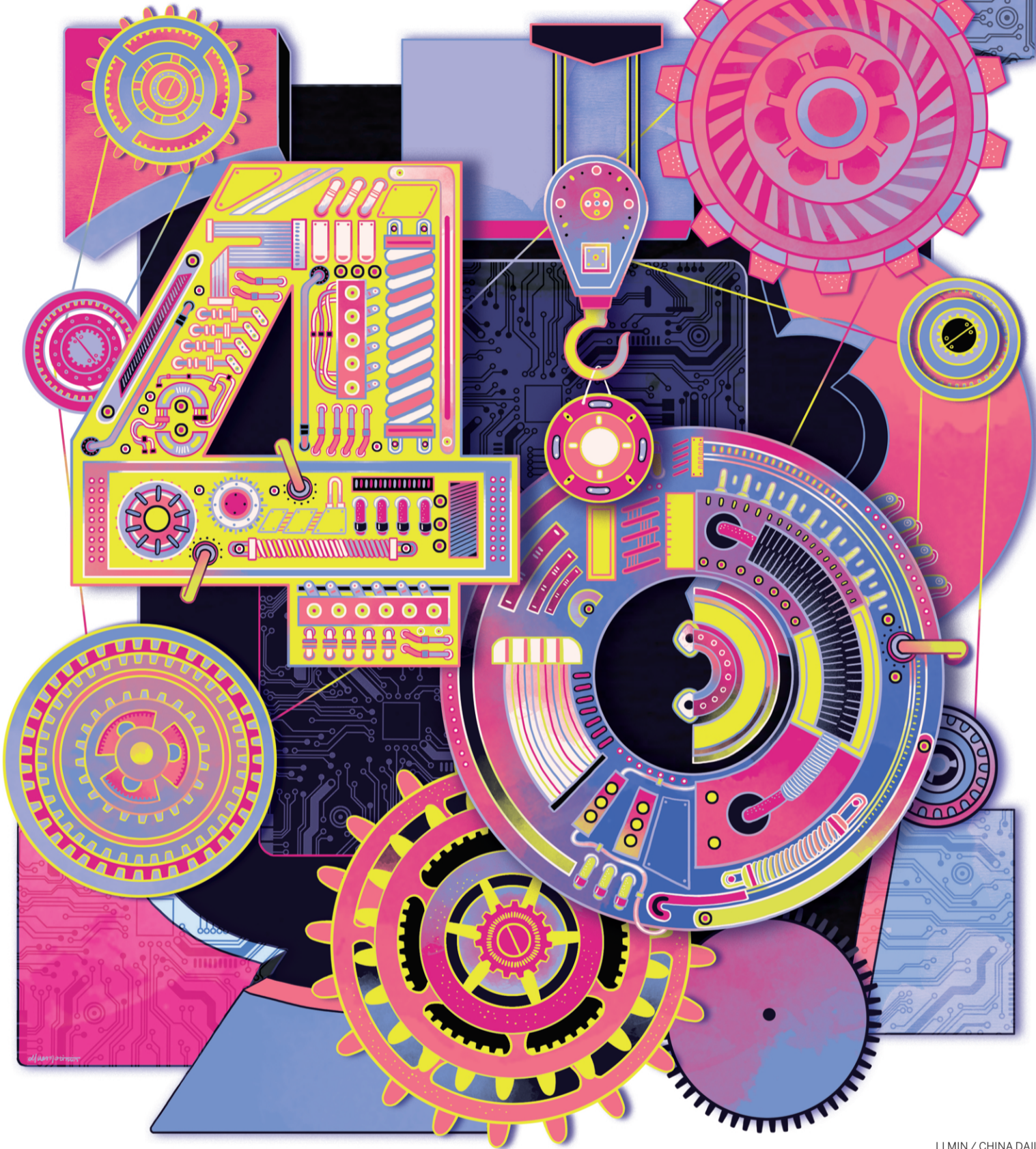
CHINADAILY

中國日報 EUROPEAN WEEKLY

INSIDE

Temptation in a clay pot p19

China's growing green power tide p26



LI MIN / CHINA DAILY

Lasting legacy of men on mission

By ZHAO XU
zhaoxu@chinadaily.com.cn

Li Xiumei loves snow. “It purifies and silences everything, especially in this part of the campus,” says the associate law professor at the Beijing Administration Institute. “After one snowy night, I came here early in the morning to sink my footsteps into the spotless white spongecake — footsteps that took me to a group of men who have occupied my imagination and much of my time for the past decade.”

To be precise, it is the repeated visits to the tombstones of these men that have kept Li in their thrall. The stones, standing quietly on a patch of land measuring about 200 square meters, are in tight formation. The intimacy is evocative because centuries ago, when those to whom the monuments are dedicated arrived in China after months, or even years, at sea, they were essentially alone, with almost no one to turn to but themselves and their God.

They were Jesuit missionaries who journeyed to China from countries including Portugal, Spain, Italy and France between the 16th and 19th centuries, and they had at least two things in common: undoubted talent — including personal and diplomatic skills — and an unwavering dedication to spreading the gospel message.

See **JESUITS** page 16



Li Xiumei, associate law professor at the Beijing Administration Institute, on Jesuit missionaries who came to China.
JIANG DONG / CHINA DAILY

INLAND INNOVATORS

Government initiative has led to China's non-coastal provinces making big strides in high-tech

“We are going to see a lot of provinces emerge dominant and become important innovation hubs.”

EDWARD TSE
chief executive officer and founder of Gao Feng Advisory

By **ANDREW MOODY** and **ZHU LIXIN** in Hefei

Hefei, at first sight, might not seem like a new incarnation of Silicon Valley. Although, like many Chinese cities, Hefei has a large population, of nearly 8 million — double that of Berlin or Nairobi — the development of the city, which is the capital of the inland province of

See **TECH** page 6